



www.darcmagazine.com

darc

#26 DECORATIVE LIGHTING
IN ARCHITECTURE
MAY/JUN 2018

FOUR SEASONS KUWAIT

MILAN DESIGN WEEK

1880 SINGAPORE

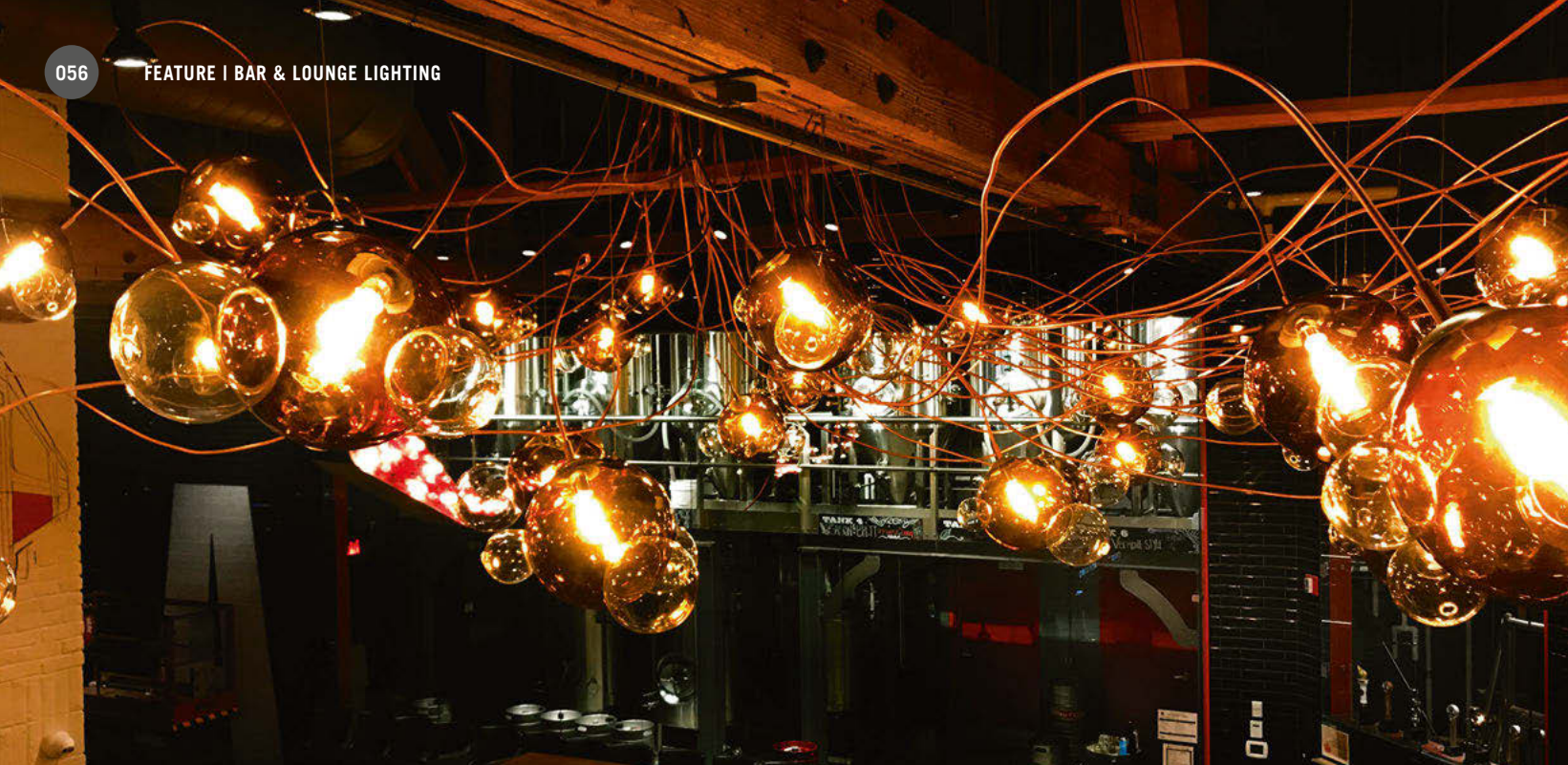
Night Light

Lighting has always been a key consideration when it comes to nightlife, but more and more bars are embracing sculptural, decorative pieces that not only bring the ambience but the wow factor too, as the following case studies highlight.



JD's Place
New York, USA

The Landmark Theatre is nestled in Midtown Manhattan at the unique, pyramid shaped building, Via 57 West, designed by renowned Danish architect Bjarke Ingels of BIG architect. The interior of the theatre was designed by Rael Architect, a firm who specialises in cinema and theatre design, with the intention to be 'the best in film for the sophisticated moviegoers.' The central element to the theatre design is the incorporation of a lounge bar in its public space where patrons can enjoy cocktails and small plates. The design scheme features a bronze-clad bar, walnut high-top bar tables and leather seats while Gala and Palindrome chandeliers from Rich Brilliant Willing adorn the lounge area.
www.richbrilliantwilling.com



Amsterdam Brewery Toronto, Canada

Founded in 1986, Amsterdam Brewery is one of Toronto's most well-known brewers. Its restaurant, Amsterdam Brewhouse, is located on the waterfront and is a hot spot for tourist and locals all year round. Working with interior design firm, mackaywong, VISO design-engineered and manufactured a show-stopping lighting installation that pays homage to the heritage of the brewery and incorporates the existing architecture into the stunning visual design.

The brewhouse is located on Lake Ontario, providing guests with a spectacular view as they enjoy a beer in the back of the restaurant. This is obviously one of the big draws of the space but the client wanted to bring more ambience (and customers) to the front bar area. Along with mackaywong, who

led the renovation of the restaurant a few years back, VISO created a unique custom design chandelier.

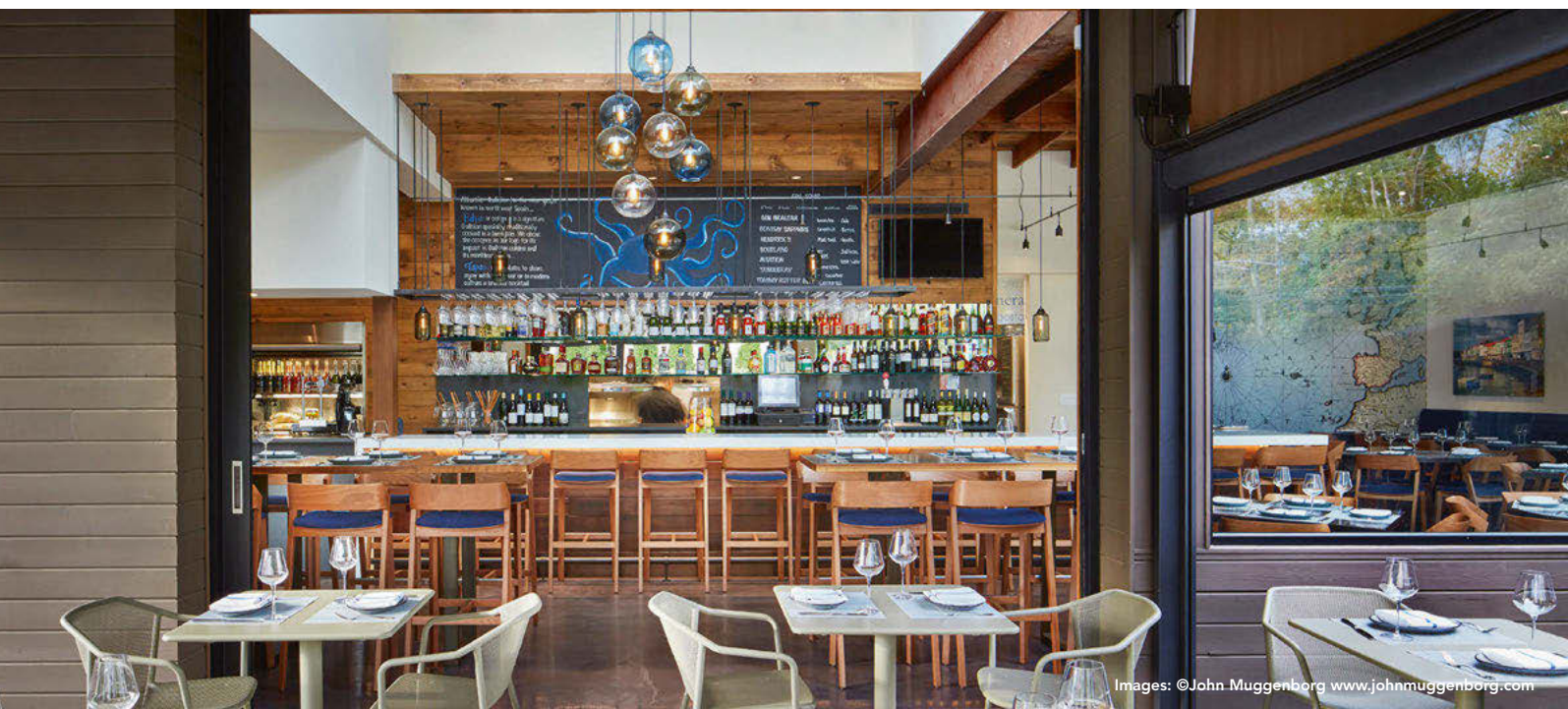
VISO's custom design chandelier uses clear coated copper piping to create an intricate web around the existing wooden beam structure, which is part of the original heritage design. At the end of each copper pipe sits an amber coloured glass globe with three smaller clear globes attached. The chandelier measures 300ins/7,620mm by 228ins/5,790mm with a 112ins/2845mm drop and features 48 glass globes.

The inspiration for this chandelier is Amsterdam Brewery's heritage - beer. Reinard Sosroutomo, mackaywong's design lead on the project, wanted to create the illusion of beer bubbles floating in the room,

without being explicit with the design. The idea is to hopefully get people to see the light fixture as a tribute to the brewery's legacy as well as an art installation.

The wooden beams on the ceiling were both an inspiration and a challenge to the designers. While the structure is beautiful and highlights the history of the brewhouse, the beam placement meant that the chandelier had to be integrated into the existing architecture. Careful planning was done in order to find the best placements and angle for the copper pipes and the supporting ceiling anchors. The final result is a breathtaking lighting installation that translates the story and history of the client and inspires the customers.

www.visoinc.com



Images: ©John Muggenborg www.johnmuggenborg.com

Albariño Wine Bar New Jersey, US

Leslie Dowling, a New Jersey-based interior designer, was recently tasked with transforming a commercial space, which now houses Albariño Restaurant, a coastal, Spanish-inspired tapas and wine bar whose motto is 'Eat Locally, Drink Globally.' Albariño's features traditional dishes like paella and empanadas, using the best ingredients from New Jersey and the mid-Atlantic region to make their signature specials.

Terra Momo, the restaurant group responsible for Albariño, pride themselves on offering a dining experience with the common theme of earth, food, wine, and the enjoyment of life. They believe that "food should speak eloquently of its provenance, its soil, its climate, and the people who nurture it."

Dowling utilised some of the existing

architecture, like the concrete floors and 12ft high pine ceilings with raw steel beams, and incorporated those into her design plan. They were refinished to create the rustic backdrop that defines the interior.

Suspended over the communal dining area is a multi-coloured chandelier from Niche. This fixture includes a cascading cluster of their classic Solitaire pendant in sapphire, crystal, and grey glass. The Edison lamp at the centre of the simplistic silhouette and the cylindrical shape of the glass body harmonise to accentuate enduring quality and beauty.

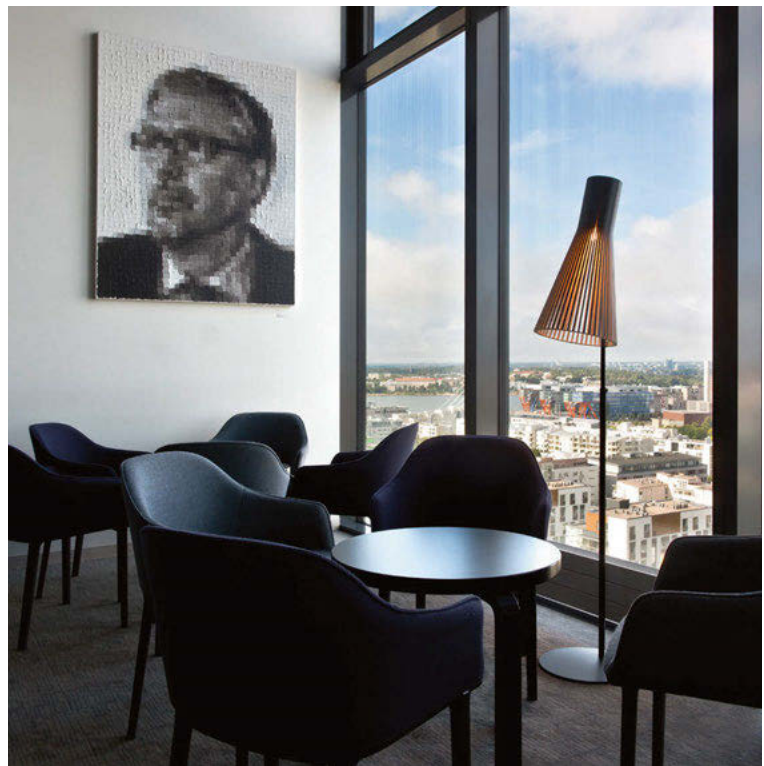
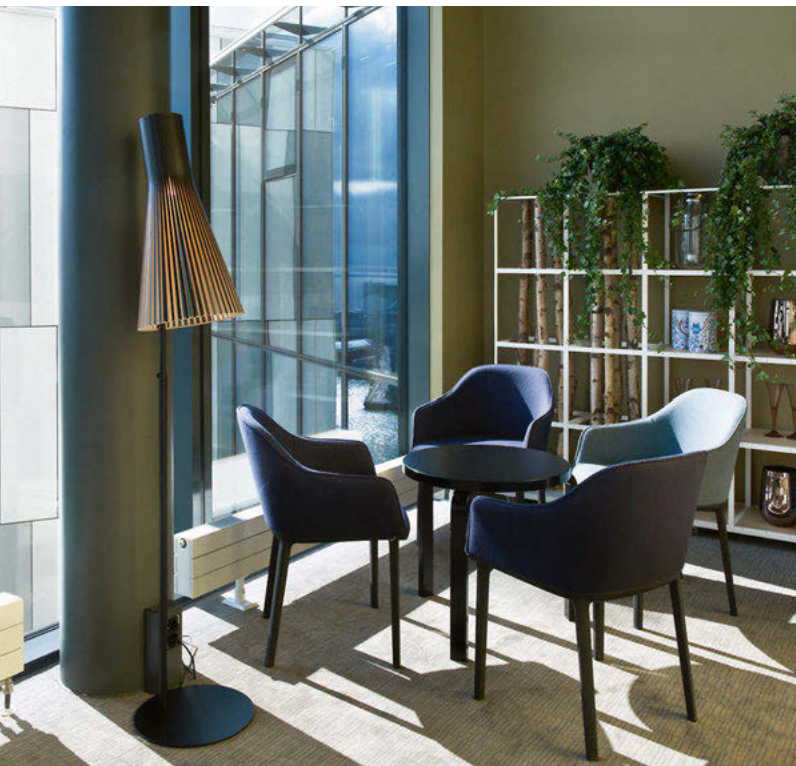
Walnut dining chairs and banquette seating are custom upholstered in dark blue denim to enhance the vintage atmosphere, inspired by the sea. This subtle but sophisticated accent complements the bold blue glass lighting featured throughout

the interior and reinforces the restaurant's coastal theme.

Handblown Helio pendants in grey glass from Niche also hang above the bar top to create an intimate setting. With a vivid array of options in both transparent and opaque glass colours, this compact yet versatile pendant charms and delights. Here, the Helio adds a chic ambiance to the popular social gathering area. Overall, the lighting featured throughout the restaurant serves as one of the restaurant's focal points. Patrons can admire them from the main dining room as well as from the outdoor patio, which is open from early spring to late autumn.

www.nichemodern.com

www.dowling-studios.com



Sky Room Helsinki, Finland

Classical and contemporary, Helsinki's skyline received a distinguishing feature when Nordic Choice Hotels opened Clarion Hotel Helsinki in October 2016. This landmark, one of the highest buildings in Helsinki, is located in the new urban district of Jätkäsaari.

Designed by architects Davidsson Tarkela Oy, Clarion has become the hotspot for locals and tourists alike. The harmoniously decorated rooms, restaurant with relaxed atmosphere and delicious food, high quality

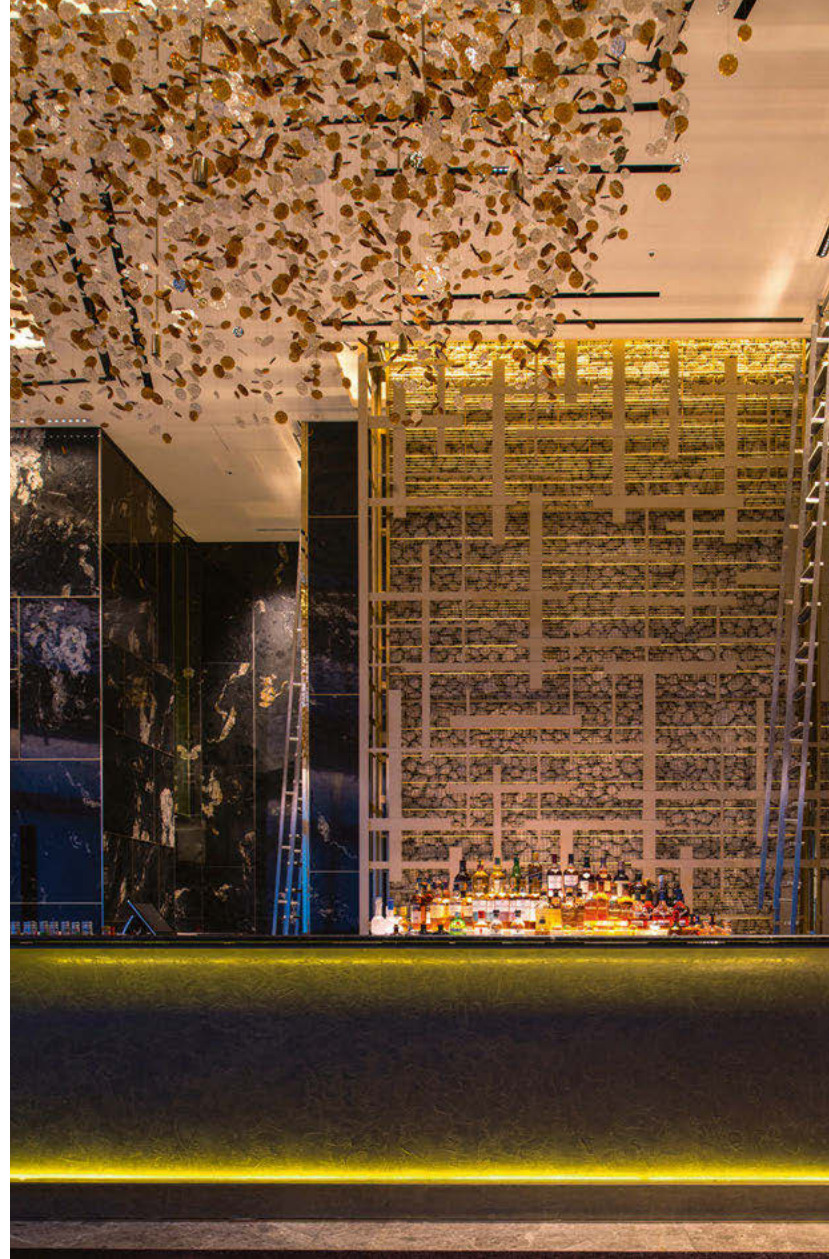
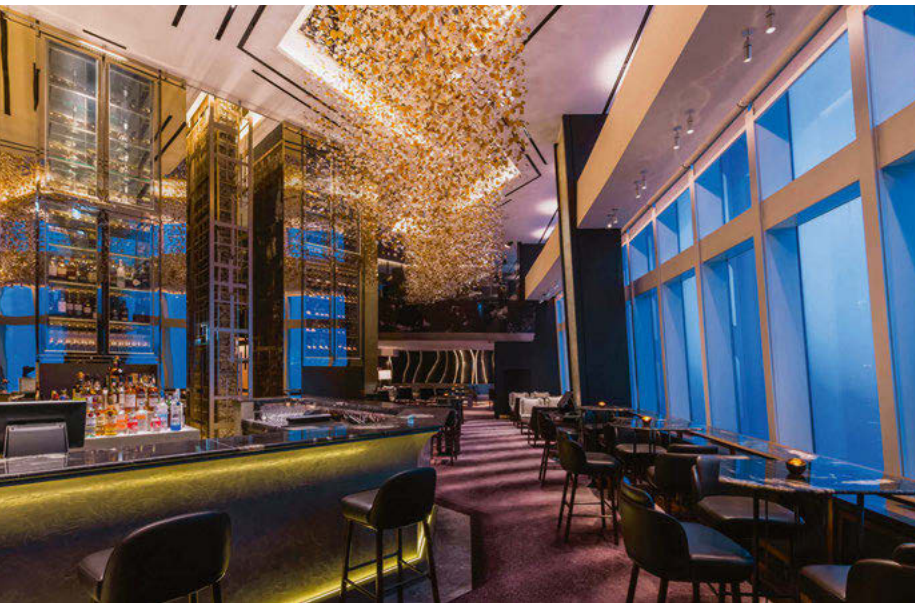
meeting facilities and of course its inviting Sky Room bar on the 16th floor provide unique settings for a casual get together or a business event.

As part of the collaboration with Helsinki Design Week in 2017, Secto Design created a light installation in the hotel lobby as well as lighting for the Sky Room bar with Secto 4210 floor lamps. Secto floor lamps became a permanent part of this unique bar and lounge, which has a magnificent view over Helsinki, the old dockyard area and the

horizon of the Baltic Sea. The floor lamps create a cosy and inviting atmosphere in the Sky Room with their soft light filtering through their wooden conical shades.

The collection has a clear and timeless Scandinavian feel. It is both classical and contemporary at the same time. All lamps in the collection are hand crafted in Finland using PEFC-certified birch wood. The entire collection is designed by the award-winning architect Seppo Koho.

www.sectodesign.fi



Bar 81 Seoul, South Korea

The Signiel Hotel is situated between levels 76 to 101 of the newly completed Lotte World Tower, Seoul's tallest building and a new landmark on the skyline. Inspired by French luxury, Bar 81, an upscale champagne bar situated on the 81st floor of the tower offers panoramic views of the Han river and the city. The bar serves a full selection of champagnes from around the world. The designers enveloped the double-volume height bar in white stone caged in satin brass compartments, a play on the traditional cellars found in Europe. Inspired by the song "Champagne Supernova" by the band Oasis, the team worked with renown crystal light fixture makers, Lasvit to create a sea of hand-blown crystal bubbles suspended over the entire bar. Patrons of the bar will be able to sip Champagne under a sea of ethereal fizzy bubbles. A private lounge located on the mezzanine and accessed via a sculptural stair, hugs one end of the bar. Patrons here have a dedicated butler service and be able to enjoy views of the Han river but also the

action down below.

"The intent was to ensure the lighting levels were balanced such that the glazing wouldn't turn into a 'mirror' at night so guests had visibility and were able to admire the city views," said Leonard Lee, Regional Creative Officer/Regional Managing Director, Wilson Associates' Asia-Pacific. "We've always placed emphasis on indirect lighting to provide a theatrical atmosphere in a bar. General lighting levels were dependent on indirect light from the caged stone features, bar and the Lasvit installation."

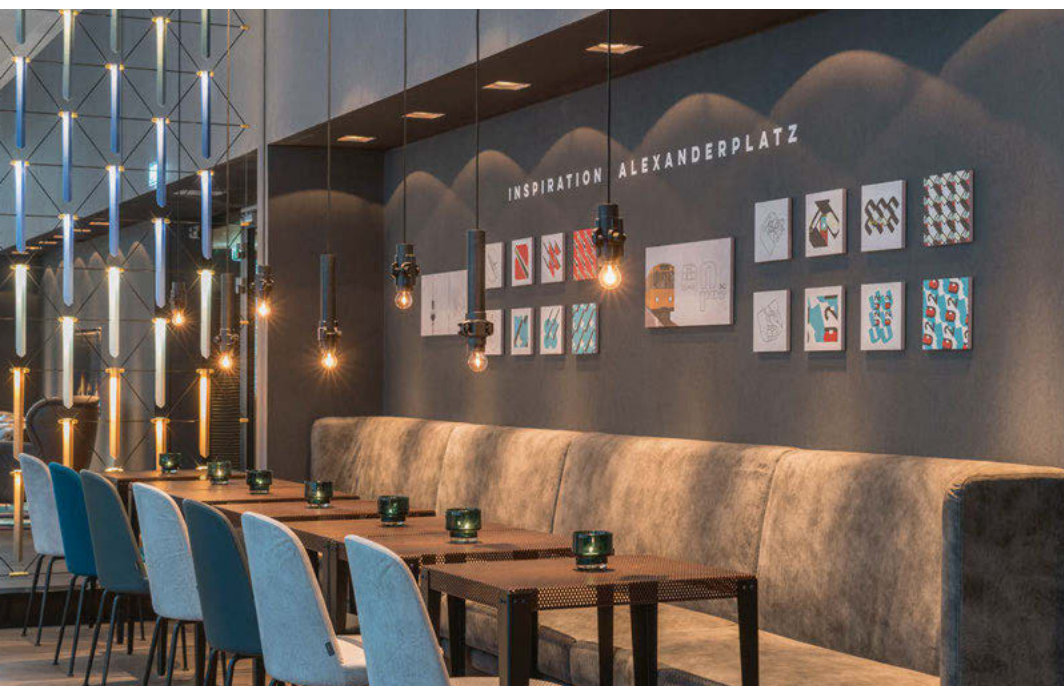
The design of the chandelier installation allowed guests to be immersed in the design concept of Signiel Seoul, which carries forward Lotte's standards of sophistication and subtle luxury.

As the tallest building in Korea and the fifth tallest in the world, the design team used height as a key element in this project. Nearly all of the hotel's public spaces, including Bar 81, feature double height ceilings to reflect the sense of airiness that comes with a setting in the clouds,

and evoke a sense of grandeur as guests experience the spaces. The scale of the chandelier heightens the space, running the entire length of the bar where most guests sit underneath the handblown crystal bubbles. As opposed to working with other manufacturers of bespoke lighting installations, Wilson Associates' Asia-Pac design team chose to work with Lasvit thanks to their close working relationship over the years on other hospitality projects. "In short, we trust them and their capabilities and they always deliver," said Lee. The latest collaboration proved to be one of their best, resulting in an installation that creates an impactful visual statement in the space. "Besides the fact that the lighting installation embodies the concept of a champagne bar, it adds drama into the space drawing guests eyes upwards," said Lee. "They appreciate the subtle coloration of the bubbles as they appear to fizz upwards."

www.lasvit.com

www.wilsonassociates.com



Motel One Lounge Berlin, Germany

'Fashion meets street art' is the theme of the tenth Motel One hotel located in Berlin-Alexanderplatz. A Munich-based company, which currently operates 63 hotels in Europe, the hotel chain offers a unique combination of high-quality interiors and exclusive design, with a goal: that every hotel tells a different, locally inspired story. The Motel One design team worked with Designheure to meet the required spirit of this place. Choosing to integrate the latest Designheure collection Mozaik, an architectural and modifiable collection designed by Davide Oppizzi to structure the space. The inspiration for the collection comes from the concept of mosaics and its

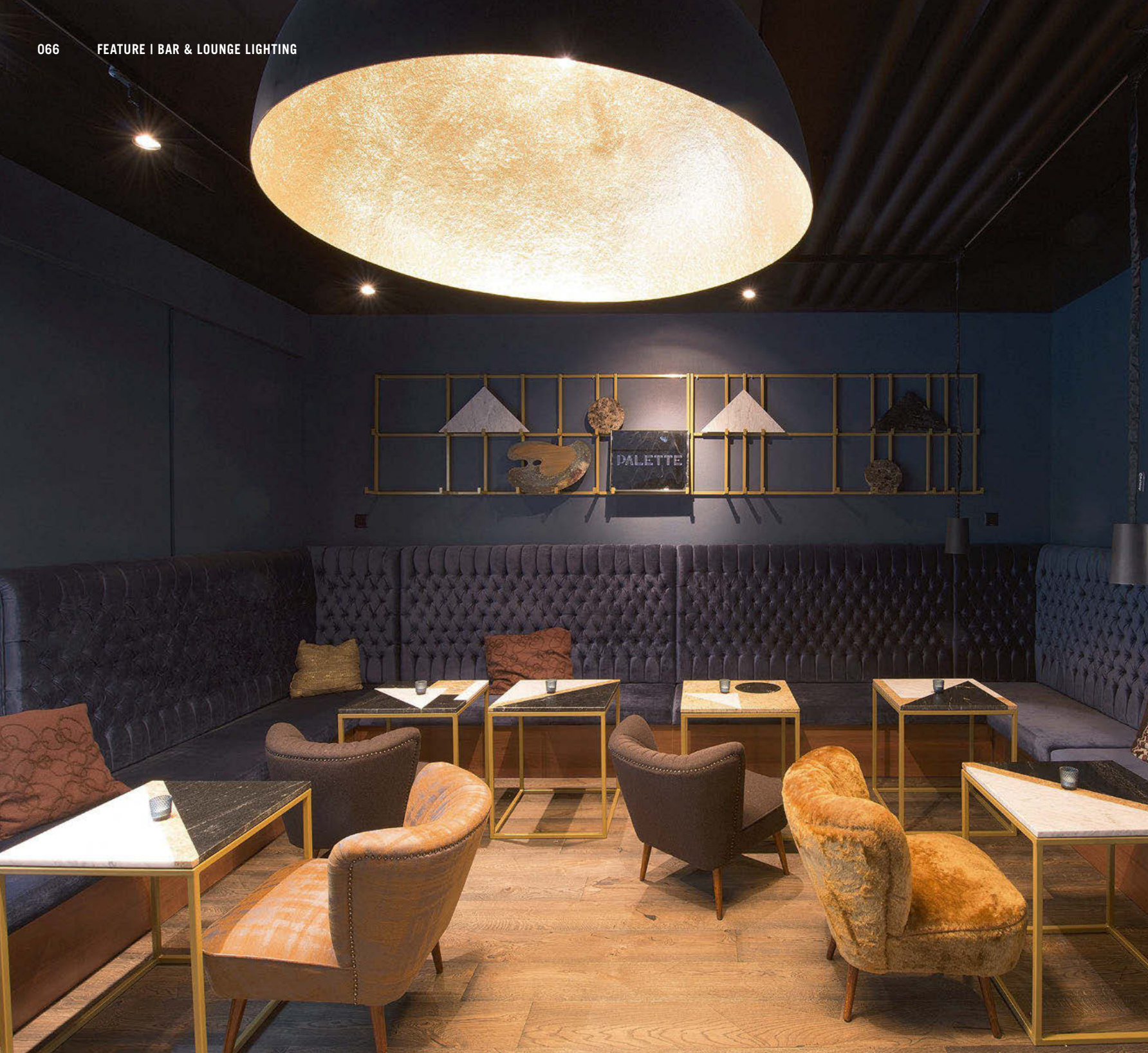
geometric shapes. It was also about creating a luminous surface, falling like a rain of meteorites, cutting the space and not just bringing a luminous point. Designheure developed custom-made Mozaik panels for the Motel One Lounge, created with different shades of green and blue. The tones of the panels match perfectly with the dominant of taupe, blue and yellow, chosen for decoration and furniture. Mozaik lighting space dividers embody the hotel theme with their graphic and unique shapes, and participates in the singular atmosphere of the lounge. The panels structure the space while bringing a pleasant light, back-lighting the internal

colour of the different shades.

The carefully proportioned patterns and textures come together in these panels to establish a connection between lobby and bar / lounge areas, while offering the visitor the vision of the fashion wall art. Arranged on each side of the lounge they separate the different spaces subtly, in transparency, while recreating intimacy in this crossing place.

The result is a unique combination of colourful high-end lighting and graphic design that fits perfectly into the architectural and interior design project.

www.designheure.com



Palette Bar Zurich, Switzerland

Located right on the famous Bahnhofstrasse in the ground floor of the Hotel Townhouse you will find the Palette Bar, a cafe, restaurant and lounge bar. The space is designed by 12AMTODAY, a creative design and architecture studio focused on international projects in design, contemporary art and fashion. Zurich Main station is just around the corner, with the hectic bustle of Bahnhofstrasse still in your ears, by entering this bar you are enveloped in security and cosmopolitan serenity: from a bright and airy entrance into the dark.

The space is divided into a light area and a dark area. Guests will notice as soon as they enter the light area the plants hanging from the ceiling and the Trama pendants by In-es. artdesign with knitted white lampshades in the front of the room, which cast beautiful shadows on the walls and ceilings. These pendants are characterised by an entirely handmade knitted fabric structure mixed with special resins. The suggestive crochet effect of light and shadow on the walls creates a cosy and intense atmosphere. As you move to the back of the bar it gradually gets darker with dark blue rich

velvet couches. The protagonist of this room is the gigantic Mezza Luna 2 pendant lamp also by In-es. artdesign, black with a gold like interior hanging from the centre of the ceiling, it is made of Nebulite, a specially developed material made of resins and fibers, that mimic the uneven, softly luminescent qualities of the moon's surface, the pendant is surrounded by comfortable custom made chairs and beautiful especially designed for Palette designed marble tables.

www.in-es.com



G Hotel Bar Pescara, Italy

The contemporary glamour of Linea Light's Mongolfier has been chosen to illuminate and warm the atmosphere of the living area of the G hotel in the centre of Pescara. The living space consists of a hall and a lounge area which are versatile and open to the city, where dynamism and relaxation co-exist in perfect harmony. The interior mixes elegance with Italian design, while outlining a new space where people can meet, read, relax, work or stop to have a snack.

Mongolfier, the Linea Light Group family of suspension lights is an organic structure that wraps around itself, until it assumes a circular tapered shape, the Warm Tune dimming technology, that distinguishes Mongolfier family, allows the light flowing from the LED source to change its intensity and colour temperature at the same time, creating the best setting according to the moment. Thanks to its high color rendering (CRI92) Mongolfier guarantees a correct and constant perception of colour.
www.linealight.com



The London Bar Los Angeles, US

Richmond International was appointed to redesign The London Bar and Boxwood Restaurant at The London West Hollywood, with the aim of creating a relaxed bar, restaurant and lounge area that could operate both as individual spaces and one cohesive entity. Inspired by English country house conservatories and orangeries, the bar and restaurant exudes a smart yet relaxed atmosphere.

From the very beginning of the design process, lighting played a key role, especially within The Boxwood Restaurant, where there is an abundance of glimmering outdoor light and inspiring views from the breakfast room. This was thoughtfully taken into account to ensure the lighting was unobtrusive and complementary to the interiors in the daylight, whilst adding another dimension and greater depth to the space in the evening. The combination of natural light and subtle features allowed Richmond International to achieve a feeling of casual opulence and understated luxury. www.richint.com

Best Western Plus Bar Schwalbach, Germany

Best Western Hotel Group enlisted Knikerboker to transform its hotel bar. The hotel required chandeliers on the bar counter and a custom light which perfectly fitted to the wave of the ceiling. For the bar counter, the team used items from the Stendimi collection, where shadows alter the shape and the sheet metal moves like clothes hanging in the wind. The chosen colours, black and gold leaf, meet the surrounding environment adapting to the Nordic design of the bar.

The real challenge was the ceiling lamp, where a unique light fixture had to be designed for the decorated ceiling reproducing a wave, tightening at the end of the room. The team wanted to change consistency to solid but thin pieces of aluminium turning them into smooth waves, like the marine ones. A ten meters lamp was born; it was made in different aluminium modules, covered with gold leaf, with hand-made cuts where light spreads above and below the lamp thanks to 10W 3000° K LED COB installed.

www.knikerboker.it





Leander
Bonn, Germany

The open show kitchen is the centrepiece of the GOP Bonn restaurant Leander. The pendant lamps above the bar are from Filament Style's Diamond collection. Diamond # 1, Diamond # 2 and Diamond # 5 lights combined with warm LED filament lamps from Filament Style gives off an amber glow for a warm atmosphere. In the dining area, the kitchen's sliding glass doors face the guest area, which is attractively divided into individual zones. Guests can relax in cosy nooks that are also suitable for larger groups, enjoy refined menu compositions in this elegant restaurant or choose your own à la carte dining experience. www.filamentstyle.com

The Klosterhof Bar Bayerisch Gmain, Germany

The Klosterhof is a four-star premium wellness hotel in Bayerisch Gmain. Re-opened after a renovation and expansion phase in July 2016, the interior is a successful combination of historic-tradition and modern elements. Above the bar area Industrial lights by dreizehngrad contribute to the wellbeing of the guests. Inspired by the design of classic industrial lamps, the Industrial Collection is comprised of mouth-blown crystal glass combined with turned oak wood. The glass shade is supported by a wooden cone that accommodates the LED light source and the technical components. Switched on the pendants produce a precise cone of light – a comfortable direct lighting without glare. www.dreizehngrad.de

